

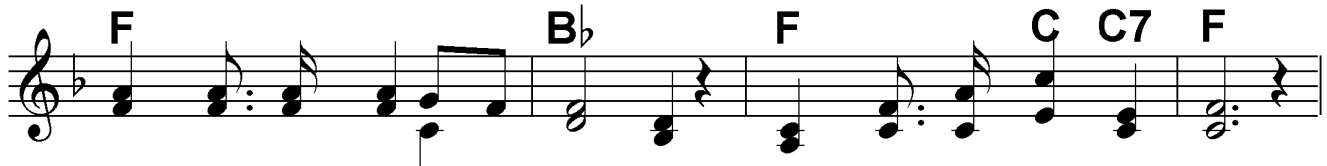
Who At the Door is Standing

Words: Mary Bridges Canedy Slade, 1876

Music: Asa B. Everett



1. Who at my door is stand - ing, Pa - tient - ly draw - ing near,
2. Lone - ly with - out He's stay - ing, Lone - ly with - in am I;
3. All thro' the dark hours drear - y, Knock - ing a - gain is He,
4. Door of my heart, I has - ten! Thee will I o - pen wide;
5. Guest of our love, He sees us, O - pen - ing now our door,



En - trance with - in de - mand - ing? Whose is the voice I hear?
While I am still de - lay - ing, Will He not pass me by?
Je - sus, art Thou not wear - y, Wait - ing so long for me?
Though He re - buke and chas - ten, He shall with me a - bide.
Joy - ful - ly en - ter, Je - sus! Dwell with us ev - er - more!



Sweet - ly the tones are fall - ing: "O - pen the door for Me!



If thou wilt heed My call - ing I will a - bide with thee."